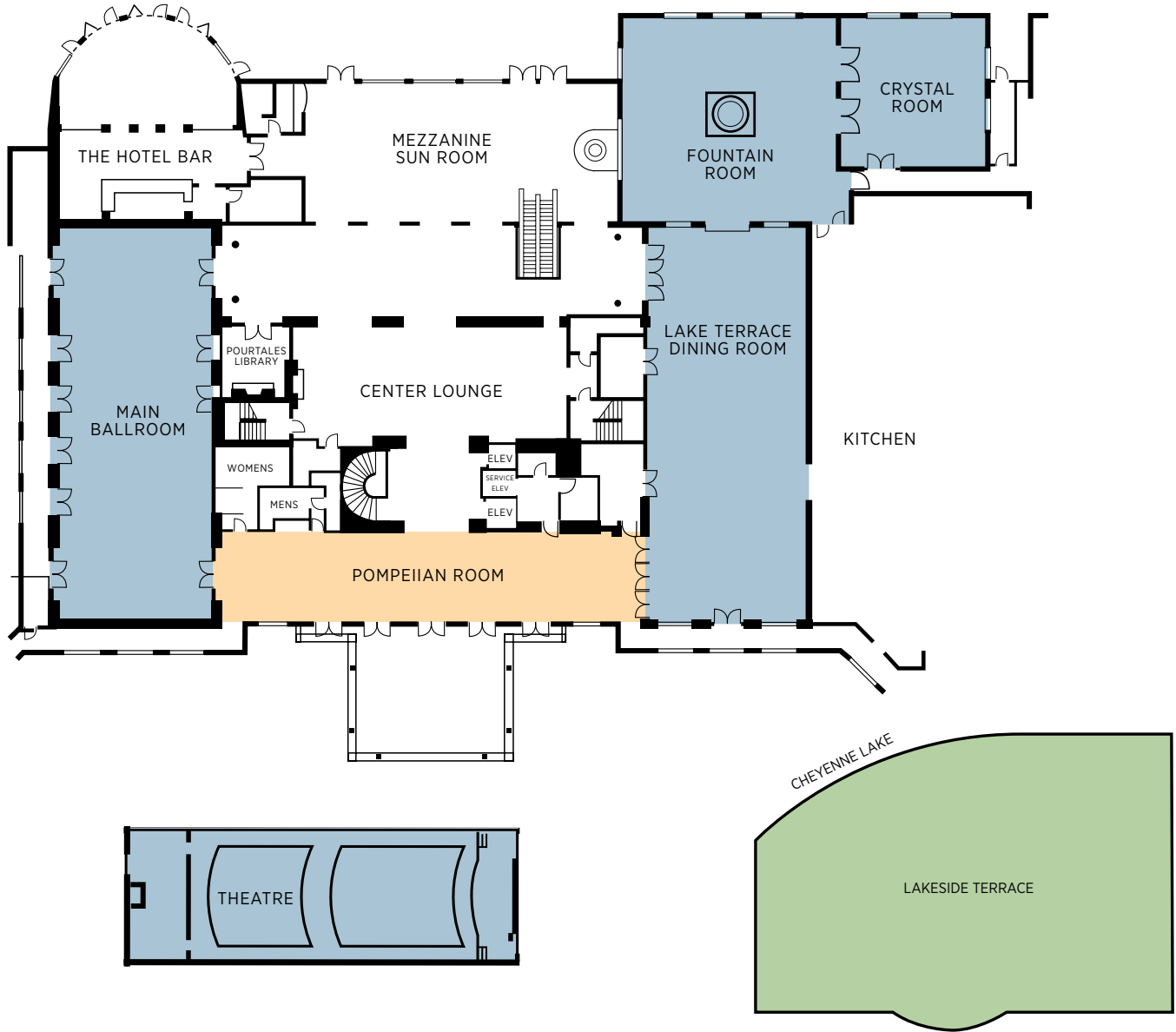


THE BROADMOOR  
MEETING SPACE

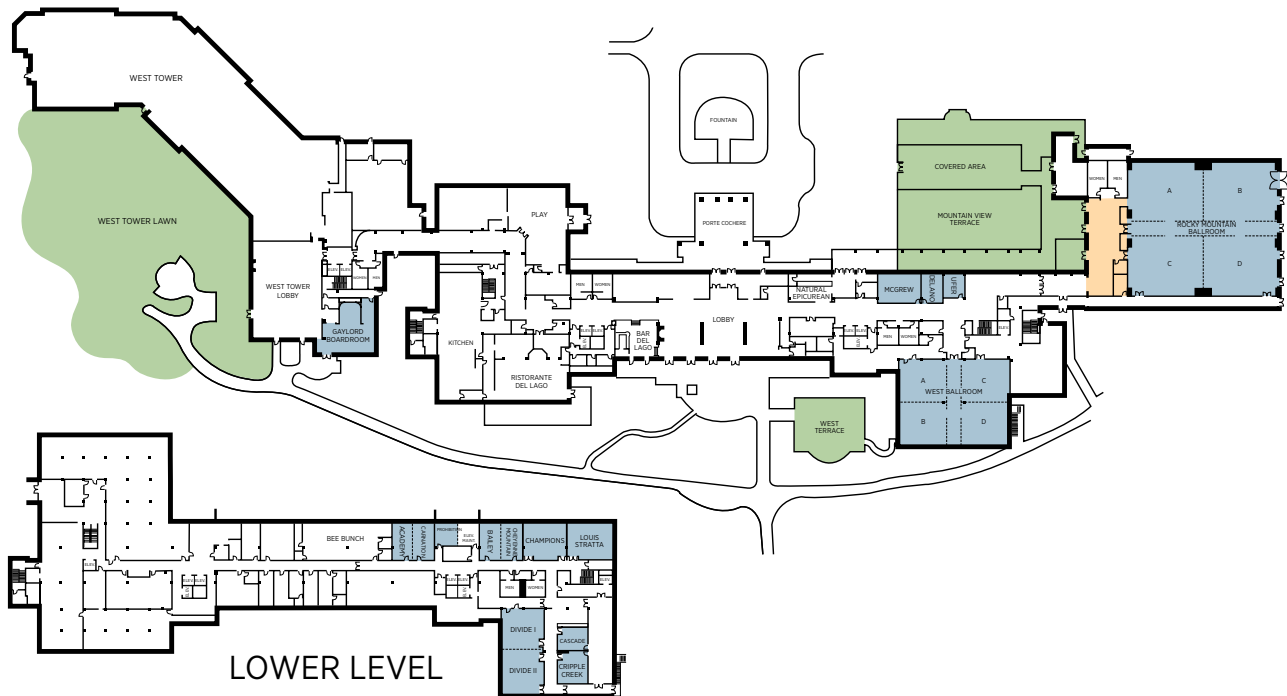


# BROADMOOR MAIN



ROOM NAMES	THEATER STYLE	CLASSROOM SET 3 PER 6'	CONFERENCE STYLE	U-SHAPE	TRADITIONAL RECEPTION	BANQUET 10 TOP	LENGTH FEET	WIDTH FEET	HEIGHT FEET	TOTAL SQUARE FEET
Main Ballroom	340	216			300	240	89	35	14	3,115
Pompeian					250	100	98	19	14	1,862
LL Lake Terrace Dining Room					300	240	88	35	14	3,080
Fountain Room					150	130	40	40	14	1,600
Crystal	130	75		24	125	70	40	30	12	1,200
Lake Terrace Dining Room/ Fountain					450	370				4,680
El Pomar				24			42	30	10	1,260
Theater							77	34	14	2,618
Main Pool	270				950	550	75	140	Outdoor	10,500
Lakeside Terrace					300	220	40	80	Outdoor	3,200

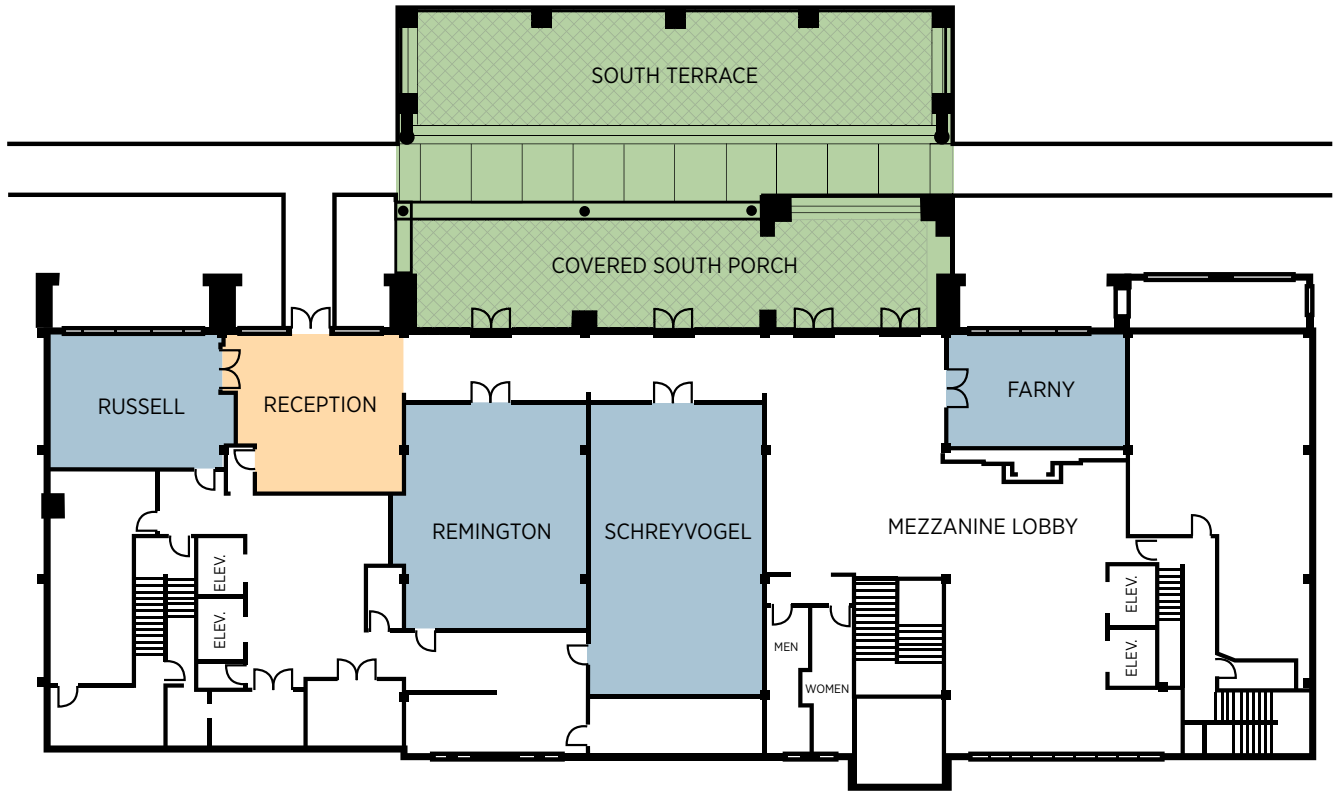
# BROADMOOR WEST



ROOM NAMES	THEATER STYLE	CLASSROOM SET 3 PER 6'	CONFERENCE STYLE	U-SHAPE	TRADITIONAL RECEPTION	BANQUET 10 TOP	LENGTH FEET	WIDTH FEET	HEIGHT FEET	TOTAL SQUARE FEET
Rocky Mountain Ballroom	1166	720			1,000	720	108	98	16	10,584
Rocky Mountain AB Aisle or CD Aisle	650	400			600	430	108	54	16	5,832
Rocky Mountain AB or CD	525	320	54	40	400	330	108	44	16	4,752
Rocky A, B, C, or D	250	160			200	160	54	44	16	2,376
Rocky Mountain Foyer					272		28	68	16	1,904
West Ballroom	525	315			500	350	75	62	10	4,650
West Ballroom AB Aisle or CD Aisle	333	205	60	45	300	200	63	48	10	3,024
Section AB or CD	222	120	20	16	175	160	63	32	10	2,016
Section A, B, C, or D	105	66	16	12	75	60	31	32	10	992
McGrew	70	45	8		50	40	30	23	10	690
Ufer	25	15	12				15	18	10	270
Delano	33	21	44	33			15	21	10	315
Divide I & II	210	129	24	18			72	27	10	1,944
Divide I	105	65	20	15			38	27	10	1,026
Divide II	100	60	8	8			34	27	10	918
Cascade	38	20	8	8			21	17	10	357
Cripple Creek	40	25	24	18			21	20	10	420
Louis Stratta	80	50	24	18			29	26	10	754
Champions	72	45	10	8			30	22	10	660
Cheyenne Mountain	38	24	10	8			15	26	10	390
Bailey	38	24	24	18			15	26	10	390
Cheyenne/Bailey	76	48	8				30	26	10	780
Prohibition	25	15	10	8			16	16	10	256
Academy	35	22	10	8			14	26	10	364
Carnation	35	22	24	18			14	26	10	364
Academy/Carnation	70	44	20				28	26	10	728
Gaylord Boardroom							40	20	10	800
Mountain View Terrace					375	250	77	88	Outdoor	7,916
West Terrace					175	130	40	50	Outdoor	2,000
West Tower Lawn					800	600	100	180	Outdoor	18,000

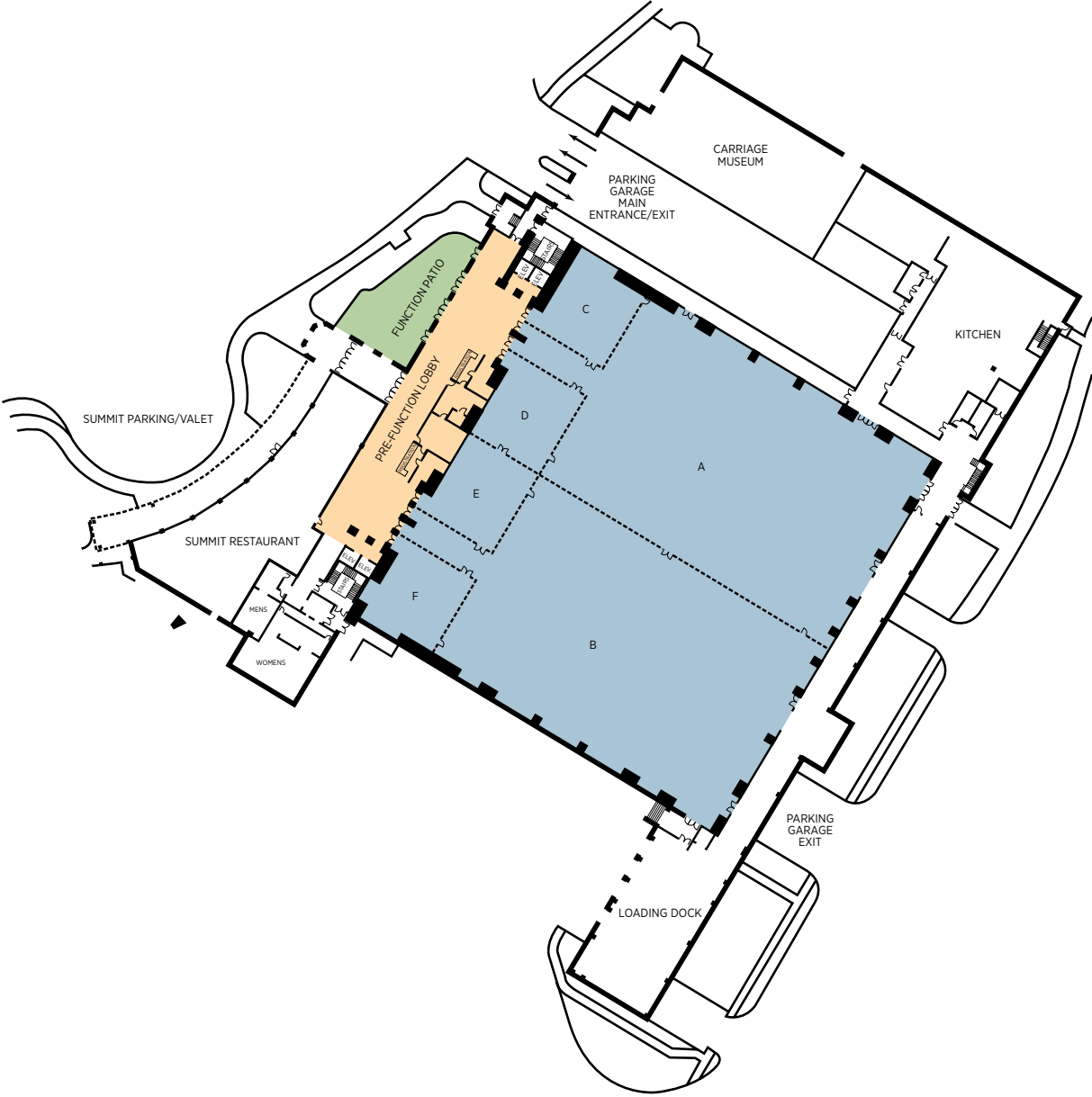
# BROADMOOR SOUTH

- MEETING ROOMS
- PREFUNCTION AREA
- OUTDOOR VENUES



ROOM NAMES	THEATER STYLE	CLASSROOM SET 3 PER 6'	CONFERENCE STYLE	U-SHAPE	TRADITIONAL RECEPTION	BANQUET 10 TOP	LENGTH FEET	WIDTH FEET	HEIGHT FEET	TOTAL SQUARE FEET
Farny Boardroom			12				27	17	11	459
Russell Boardroom			14				21	26	11	546
Schreyvogel Room	135	81	32	24	82	70	46	27	11	1,242
Remington Room	100	65	25	16	70	50	35	27	11	945
South Terrace					360	210	53	90	Outdoor	4,770

# BROADMOOR HALL



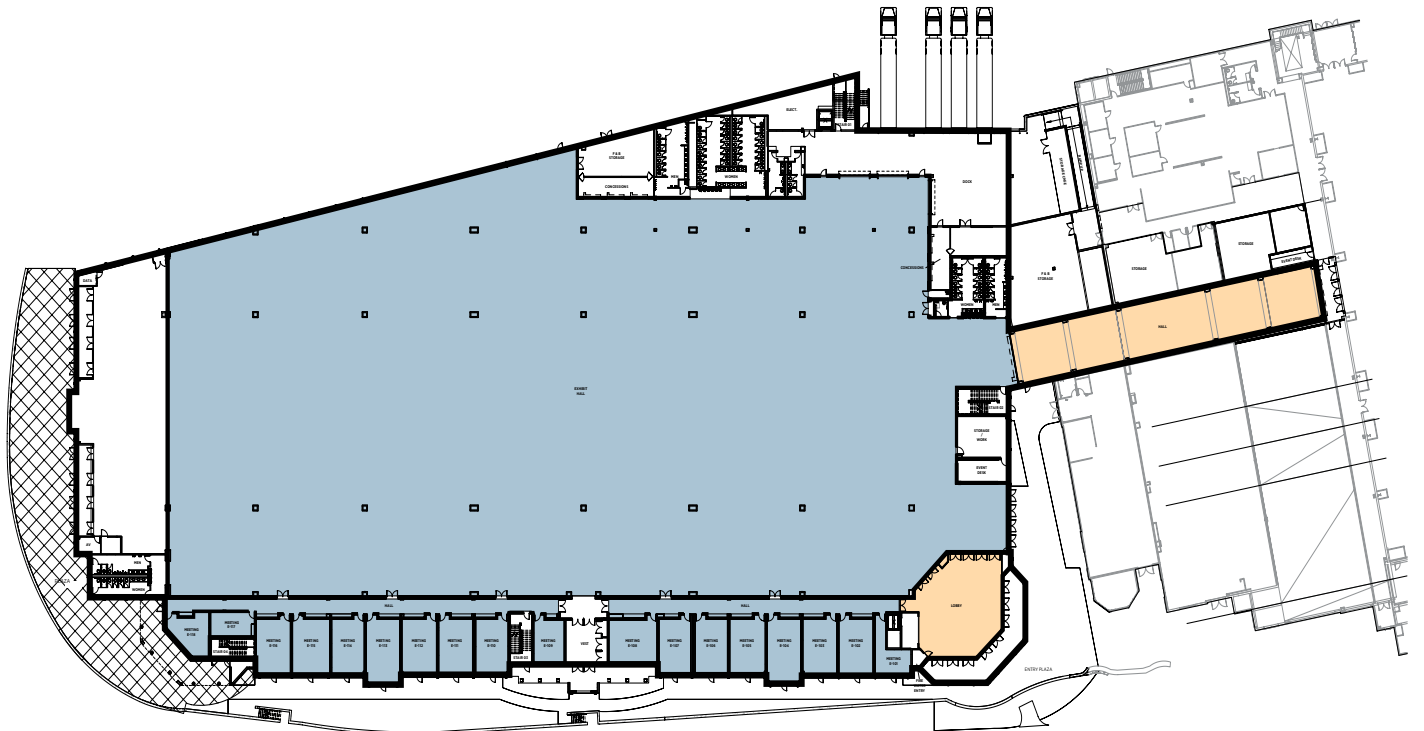
ROOM NAMES	THEATER STYLE	CLASSROOM SET 3 PER 6'	CONFERENCE STYLE	U-SHAPE	TRADITIONAL RECEPTION	BANQUET 10 TOP	LENGTH FEET	WIDTH FEET	HEIGHT FEET	TOTAL SQUARE FEET
Broadmoor Hall	6,600	4,200			4,600	3,800	250	240	25	60,000
Ballroom ACD or BEF	3,300	2,050			2,300	1,900	250	120	25	30,000
Ballroom A or B	2,666	1,653			2,000	1,800	200	120	25	24,000
Sections C, D, E or F	266	165			250	160	47	52	25	2,444
Section DE	535	335			375	300	47	104	25	4,888
Registration							20	40	9	800
Broadmoor Hall A Reg Area										511
Broadmoor Hall B Reg Area										655
Show Office A	15	12	10				19	15	8	285
Show Office B	15	12	10				21	18	8	318
Broadmoor Hall Foyer					600		34	162	14	5,508
Broadmoor Hall Patio					300	240	87	36	Outdoor	3,132
Centennial Room	44	27	12	10			31	13	8	403



# BARTOLIN HALL

- FIRST FLOOR

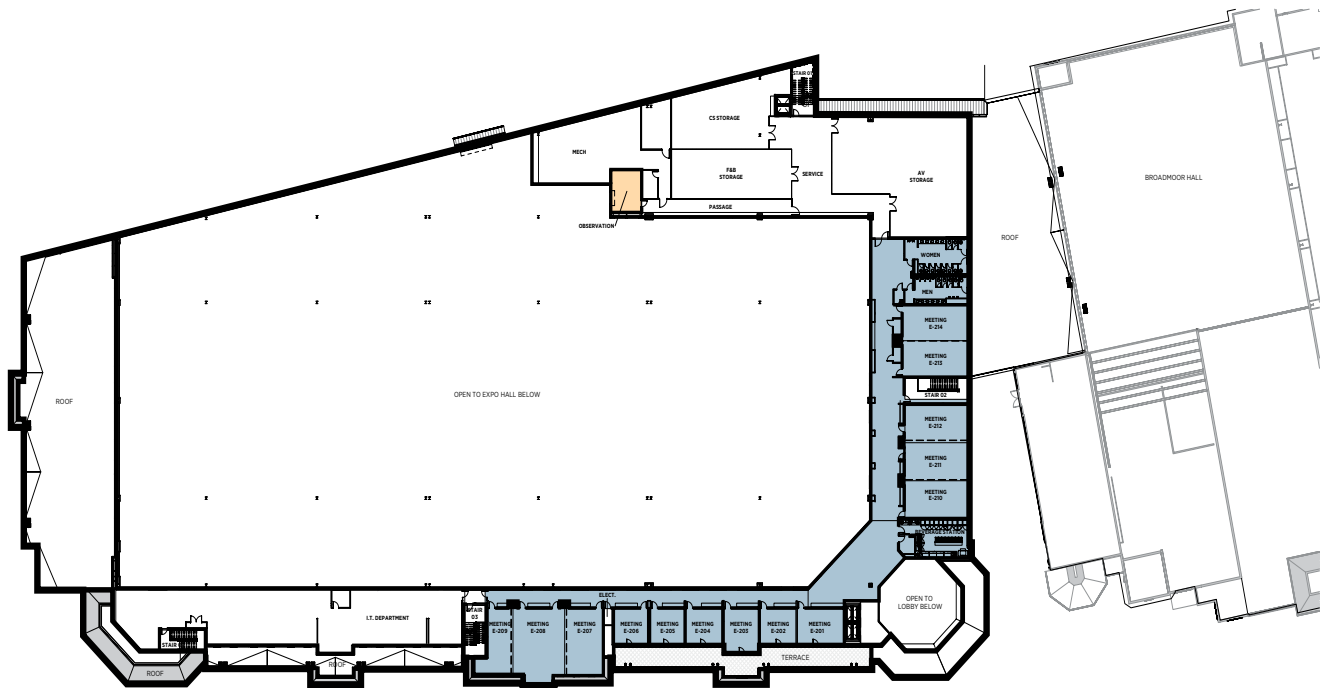
ROOM NAMES	THEATER STYLE	CLASSROOM SET 3 PER 6'	CONFERENCE STYLE	U-SHAPE	TRADITIONAL RECEPTION	BANQUET 10 TOP	LENGTH FEET	WIDTH FEET	HEIGHT FEET	TOTAL SQUARE FEET
Main Hall					6,233	5,250	485	193	25	93,500
Meeting E 101	20	12	8			10	20	13	10	247
Meeting E 102	40	24	16	12		20	19	28	10	525
Meeting E 103	40	24	16	12		20	19	28	10	511
Meeting E 104	40	24	16	12		20	18	32	10	578
Meeting E 105	40	24	16	12		20	20	28	10	539
Meeting E 106	36	20	16	12		20	18	28	10	486
Meeting E 107	36	20	16	12		20	17	28	10	477
Meeting E 108	30	24	16	12		20	26	22	10	584
Meeting E 109	40	15	12	9		10	17	22	10	377
Meeting E 110	40	20	16	12		20	18	28	10	484
Meeting E 111	40	24	16	12		20	18	28	10	510
Meeting E 112	40	24	16	12		20	19	28	10	525
Meeting E 113	40	24	16	12		20	19	32	10	584
Meeting E 114	40	20	16	12		20	18	28	10	489
Meeting E 115	40	24	16	12		20	20	28	10	564
Meeting E 116	40	24	16	12		20	19	28	10	515
Meeting E 117	24	15	8			10	24	12	10	285
Meeting E 118	36	16	12	9		10	24	20	10	413



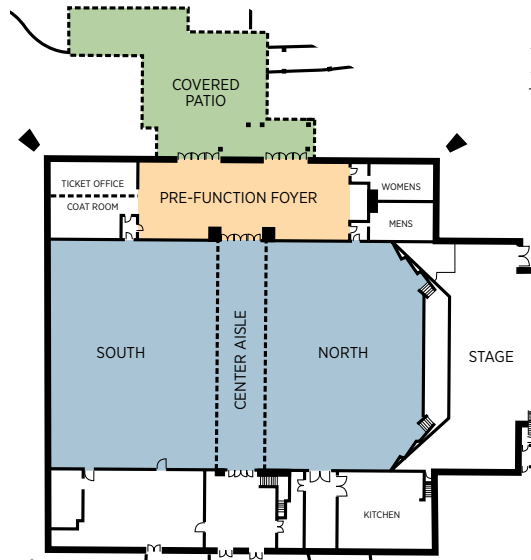
# BARTOLIN HALL

## - SECOND FLOOR

ROOM NAMES	THEATER STYLE	CLASSROOM SET 3 PER 6'	CONFERENCE STYLE	U-SHAPE	TRADITIONAL RECEPTION	BANQUET 10 TOP	LENGTH FEET	WIDTH FEET	HEIGHT FEET	TOTAL SQUARE FEET
Meeting E 201	36	16	12	9		20	25	18	10	448
Meeting E 202	25	12	12	9		10	19	18	10	343
Meeting E 203	36	12	12	9		10	19	22	10	405
Meeting E 204	25	12	12	9		10	20	18	10	352
Meeting E 205	25	12	12	9		10	18	18	10	322
Meeting E 206	25	12	12	9		10	18	18	10	316
Meeting E 207	50	30	20	16		30	20	32	10	628
Meeting E 208	80	40	30	24	70	30	30	32	10	956
Meeting E 209	25	16	12	8		20	12	32	10	397
Meeting E 207-209	200	100	50	40	133	60	62	32	10	2,005
Meeting E 210	50	24	20	16		20	34	18	10	626
Meeting E 211	50	24	20	16		20	34	18	10	623
Meeting E 212	50	24	20	16		20	34	18	10	623
Meeting E 210-212	200	90	48	36	125	60	34	56	10	1,898
Meeting E 213	50	24	20	16		20	36	17	10	618
Meeting E 214	50	24	20	16		20	36	17	10	618
Meeting E 213-214	120	60	24	20	85	50	36	35	10	1,254

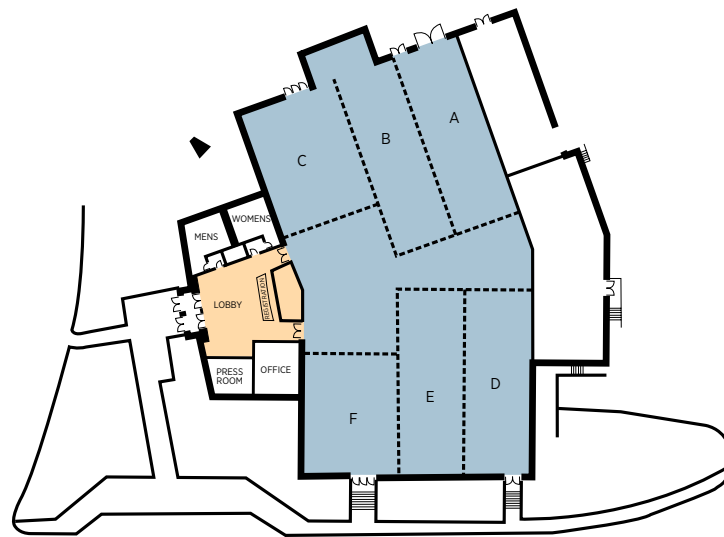


# INTERNATIONAL CENTER



ROOM NAMES	THEATER STYLE	CLASSROOM SET 3 PER 6'	CONFERENCE STYLE	U-SHAPE	TRADITIONAL RECEPTION	BANQUET 10 TOP	LENGTH FEET	WIDTH FEET	HEIGHT FEET	TOTAL SQUARE FEET
International Center	1,600	1,000			1,500	1,100	160	91	35	14,560
International Center North	680	420			600	460	68	91	35	6,188
International Center North & Aisle	890	550			750	600	89	91	35	8,099
International Center South	715	440			600	480	71	91	35	6,461
International Center Aisle	211	127					21	91	25	1,911
International Center Foyer					350		110	29	25	3,190
International Center Patio					450		60	72	Outdoor	4,320

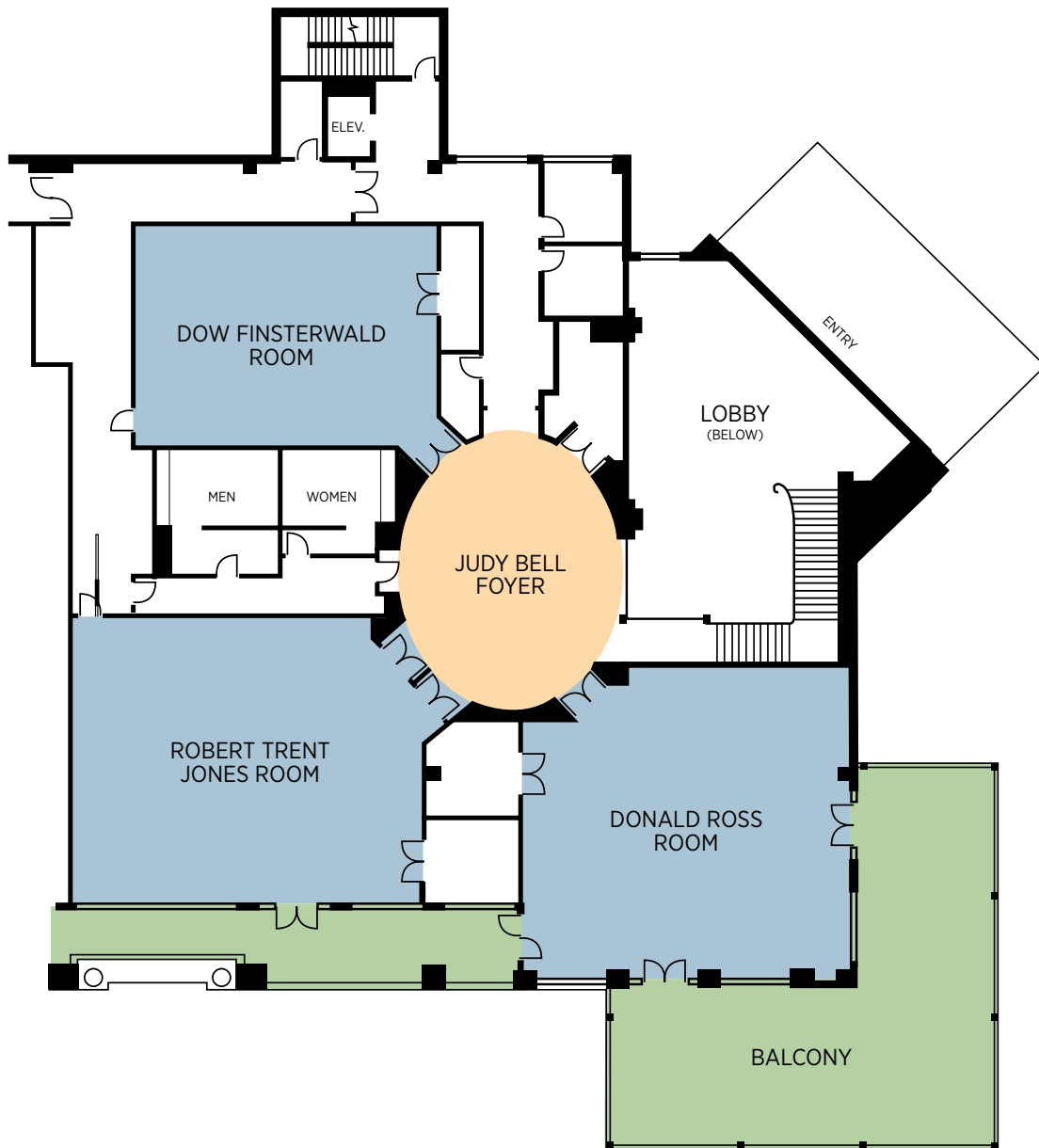
# COLORADO HALL



ROOM NAMES	THEATER STYLE	CLASSROOM SET 3 PER 6'	CONFERENCE STYLE	U-SHAPE	TRADITIONAL RECEPTION	BANQUET 10 TOP	LENGTH FEET	WIDTH FEET	HEIGHT FEET	TOTAL SQUARE FEET
Colorado Hall	1,600	1,000			1,500	1,100	150	99	15	14,850
Colorado Hall A, B, D or E	240	145	60	45	220	150	69	32	15	2,208
Colorado Hall C or F	195	120	46	34	180	120	49	36	15	1,764
Colorado Hall AB or DE	400	285			400	300	69	62	15	4,278
Colorado Hall ABC or DEF	650	440			670	500	71	93	15	6,603
Colorado Hall Center Aisle					390	300	39	97	15	3,783
Colorado Hall Press Room	40	20	8				23	19	8	437
Colorado Hall Office	30	15	8				21	15	8	315

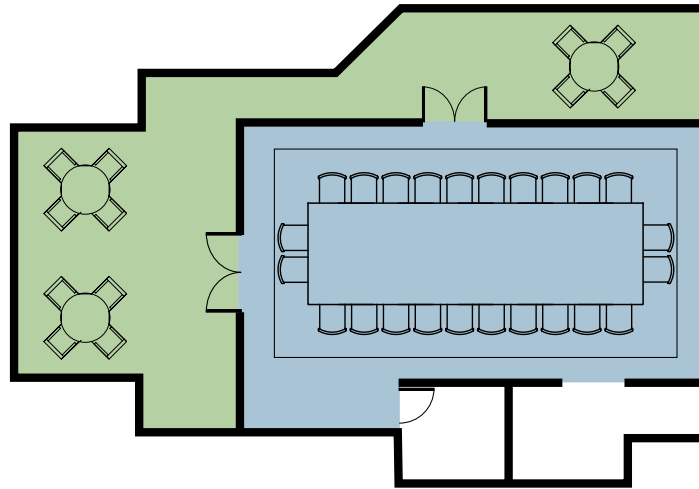


# GOLF CLUB



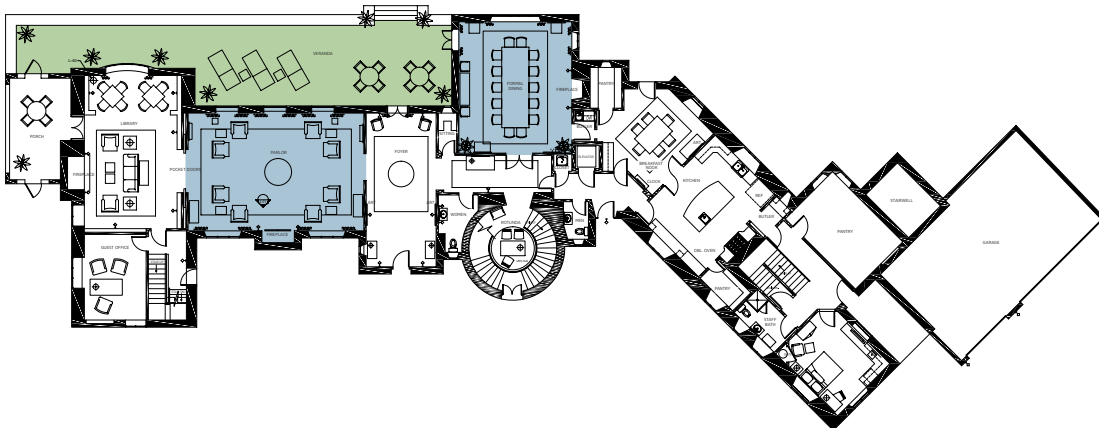
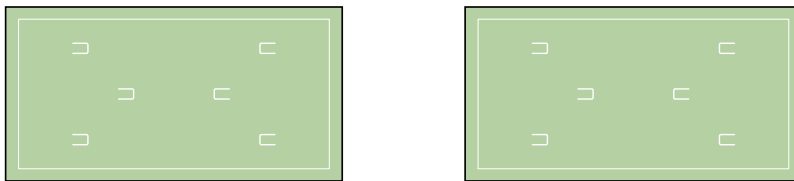
ROOM NAMES	THEATER STYLE	CLASSROOM SET 3 PER 6'	CONFERENCE STYLE	U-SHAPE	TRADITIONAL RECEPTION	BANQUET 10 TOP	LENGTH FEET	WIDTH FEET	HEIGHT FEET	TOTAL SQUARE FEET
Donald Ross	220	125	60	38	200	140	45	45	10	2,025
Robert Trent Jones, Sr.	220	125	60	38	200	140	48	42	10	2,016
Dow Finsterwald	150	95	40	26	150	90	43	32	10	1,376
Judy Bell Foyer					120		40	30	10	1,200
Golf Club Porch					60	40	27	23	10	621
Championship Patio					400	300	116	39	10	4,524

# THE FISH HOUSE



ROOM NAME	THEATER STYLE	CLASSROOM SET 3 PER 6'	CONFERENCE STYLE	U-SHAPE	TRADITIONAL RECEPTION	BANQUET 10 TOP	LENGTH FEET	WIDTH FEET	HEIGHT FEET	TOTAL SQUARE FEET
Fish House Boardroom			24	23	40		34	23	10	782

# THE ESTATE HOUSE



ROOM NAMES	THEATER STYLE	CLASSROOM SET 3 PER 6'	CONFERENCE STYLE	U-SHAPE	TRADITIONAL RECEPTION	BANQUET 10 TOP	LENGTH FEET	WIDTH FEET	HEIGHT FEET	TOTAL SQUARE FEET
Estate House Parlor	64	28	18	16	66	50	32	20	9	656

# CHEYENNE LODGE

ROOM NAMES	THEATER STYLE	CLASSROOM SET 3 PER 6'	CONFERENCE STYLE	U-SHAPE	TRADITIONAL RECEPTION	BANQUET 10 TOP	LENGTH FEET	WIDTH FEET	HEIGHT FEET	TOTAL SQUARE FEET
Cheyenne Lodge					450	300	77	82	24	6,314
Cheyenne Lodge Patio					300		60	40	Outdoor	2,400
Mountain Clubhouse					133	80	69	42	Outdoor	2,000
Mountain Clubhouse Patio					80		75	84	Outdoor	6,300
Mountain Clubhouse Lawn					300	200	75	72	Outdoor	5,400



# BROADMOOR CAMPUS MAP

